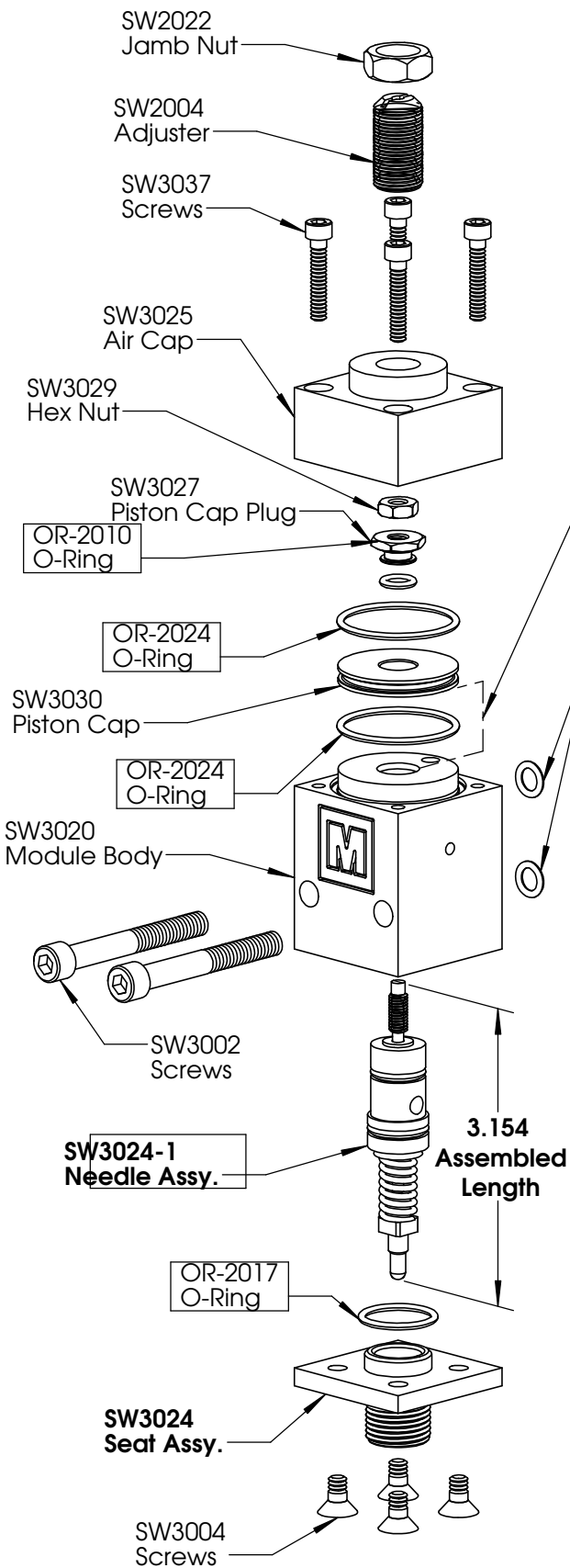
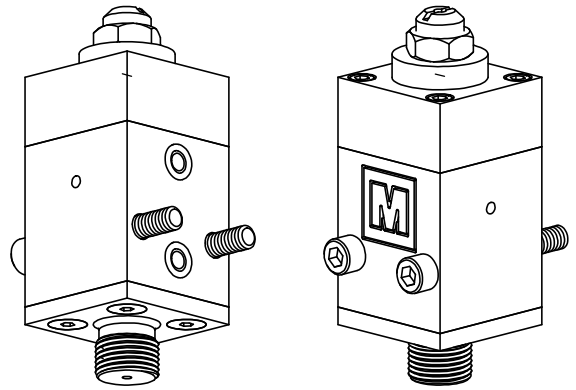


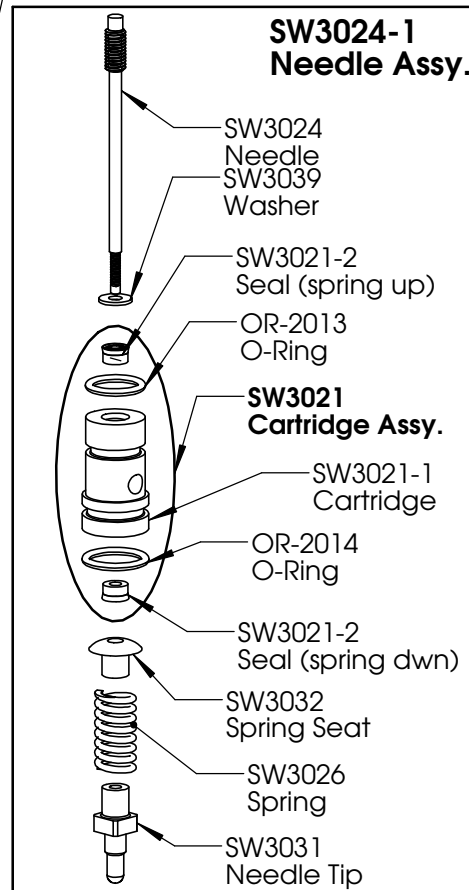
| ZONE | | REV. | REVISIONS | | DATE | APPROVED |
|------|--|------|-------------|--|------|----------|
| | | | DESCRIPTION | | | |
| | | | | | | |



Important:
There must be a gap from .025 to .030 between the piston cap bottom and the module body top when assembled.



Boxed items are part of SW3100-NCA rebuild kit



| | | | | | |
|-------------|---------|----------------------------------------------------------------------------------------------------------------------------------------------------------------------------------------------------------|-----------|------|----------|
| | | DIMENSIONS ARE IN INCHES TOLERANCES: FRACTIONAL $\pm 1/64$ ANGULAR: MACH ± 0.5 BEND \pm ONE PLACE DECIMAL $\pm .015$ TWO PLACE DECIMAL $\pm .010$ THREE PLACE DECIMAL $\pm .005$ | NAME | DATE | |
| | | MATERIAL: | DRAWN | JAO | 09/18/14 |
| | | FINISH: XXXXXX | CHECKED | | |
| | | Weight: lbs. | ENG APPR. | | |
| NEXT ASSY | USED ON | | MFG APPR. | | |
| APPLICATION | | | Q.A. | | |
| | | | COMMENTS: | | |

PROPRIETARY AND CONFIDENTIAL
THE INFORMATION CONTAINED IN THIS DRAWING IS THE SOLE PROPERTY OF MELTPRO. ANY REPRODUCTION IN PART OR AS A WHOLE WITHOUT THE WRITTEN PERMISSION OF MELTPRO IS PROHIBITED.

MELTPRO

Description:
Service Print
3100 Series Module
Micro Adjustable Flow

| | | |
|------------|----------------------|--------------|
| SIZE | DWG. NO. | REV. |
| A | SW3100 | O |
| SCALE: 1:1 | DO NOT SCALE DRAWING | SHEET 1 OF 1 |